



Synthetic Hair Care

Natural Hair Care

# CARE INSTRUCTIONS

**managertop**<sup>®</sup>  
Hair Systems

# MANAGER TOP HAIRSYSTEMS ARE PRODUCED FROM THE BEST MATERIALS AVAILABLE AND MEET HIGHEST REQUIREMENTS.

The crucial point for taking much pleasure in your Manager Top hairsystem for a long time, is the right care. Moreover the right care also guarantees a good and natural appearance of your hairsystem.

For this purpose please read the following care instructions very carefully.

The Manager Top hairsystem should be treated with Manager Top care products approximately once a week. Due to natural transpiration and sebum which can damage the hairsystem, the regular care is necessarily required. When using Manager Top care products regularly, the hairsystem also lasts longer and keeps its silky shine and natural hold.

Moreover every 6 weeks a professional cleaning, reconditioning and restyling through your Manager Top hair specialist is recommendable.

In case of further questions please contact your Manager Top hair specialist who can give you helpful advice.

**manager top**<sup>®</sup>  
Hair | Systems

## CARE INSTRUCTIONS FOR HAIRSYSTEM OF HUMAN HAIR



### Caution

Never let balm as well as other fatty products get in contact with cap. Fatty substances may destroy knots.

Wash your alternative hair only as often as necessary. How often your hairsystem has to be cleaned depends on your personal transpiration in connection with your everyday activities. 1-2 times per week is usually enough.

Please do not rub cap with your fingers.

Brush very carefully!

## Regular Attachment

Cleaning	Use <b>Manager Top Cleaner</b> to clean skin and adhesive surface of hairsystem. Apply Manager Top Cleaner, let it soak for a short time and then carefully wipe adhesive with a cloth.
Washing	Brush dry alternative human hair very carefully. Afterwards clean it in lukewarm water using <b>Manager Top Vital Shampoo</b> (especially made for alternative human hair). Mix 1 tablespoon with 1 litre lukewarm water. Wash carefully, do never rub or wring. After shampooing please rinse with lukewarm water and squeeze softly. The special silk-complex makes hair soft, shiny and easy to comb.
Shine and care	Apply approximately 5 ml, i.e. 1 tablespoon <b>Manager Top Vital Balm</b> (especially made for alternative human hair) to damp hair with hands. Leave in 3-5 minutes. Rinse and squeeze hairpiece softly in a towel. The balm penetrates quickly into hair, supplies hair with nutrients, reduces porosity and gives natural moisture.
Drying	Squeeze hairsystem softly in a towel. Afterwards let hairsystem air dry without extra heat as far as possible. Therefore put hairpiece on the wig stand and brush or comb hair very carefully. If required the hairpiece can be blow-dried when nearly dry, but only at very low! temperature.
Shine and hold	Perfect finish for all hairstyles. Hairsystem will stay longer in good condition and full of natural shine by daily use of <b>Manager Top Hair Shine + UV-Protection</b> . Gently moistening without overloading. Spray sparingly on dry hair.

## Permanent Attachment

Brush dry hairpiece very carefully. Afterwards clean it carefully with lukewarm water using **Manager Top Vital Shampoo** (especially made for alternative human hair). Apply shampoo direct on wet hair and shampoo the hair very carefully and evenly in direction of hair growth.

After shampooing please rinse with lukewarm water and squeeze softly. The special silk-complex makes hair soft, shiny and easy to comb.

Apply approximately 5 ml, i.e. 1 tablespoon **Manager Top Vital Balm** (especially made for alternative human hair) to damp hair with hands. Please do not apply to cap. Leave in 3-5 minutes and rinse carefully afterwards. Squeeze softly with a towel. The balm penetrates quickly into hair, supplies hair with nutrients, reduces porosity and gives natural moisture.

Squeeze hairsystem softly with a towel. Afterwards brush and comb hairpiece very carefully and let it air dry without extra heat as far as possible. If required, the hairpiece can be blow-dried when nearly dry, but only at very low! temperature.

Perfect finish for all hairstyles. Hairsystem will stay longer in good condition and full of natural shine by daily use of **Manager Top Hair Shine + UV-Protection**. Gently moistening without overloading. Spray sparingly on dry hair.

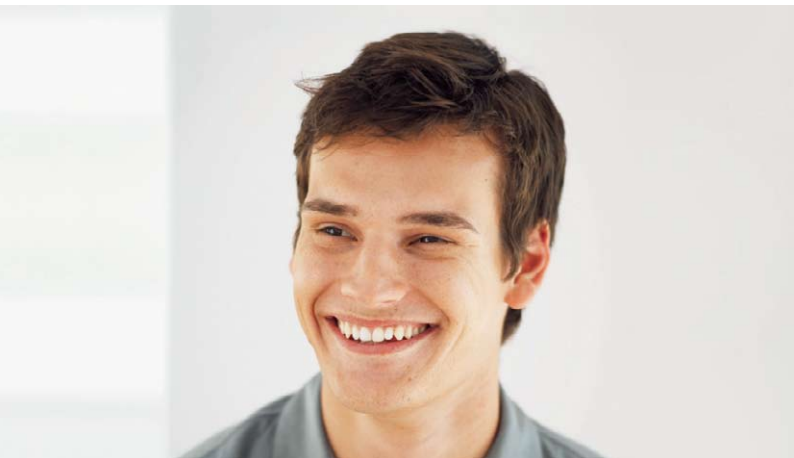
Washing

Shine  
and  
care

Drying

Shine  
and  
hold

## CARE INSTRUCTIONS FOR HAIRSYSTEMS OF SYNTHETIC HAIR



### Caution

Keep out of heat

Be careful when opening an oven door and keep out of steam from boiling water. Do not use a hair dryer or curling iron.

## Regular Attachment

Cleaning	Use <b>Manager Top Cleaner</b> to clean skin and adhesive surface of hairsystem. Apply Manager Top Cleaner, let it soak for a short time and then carefully wipe off adhesive with a cloth.
Washing	Mix 1 tablespoon <b>Manager Top Shampoo</b> with 1 litre lukewarm water and wash carefully. Do never rub or wring your hairsystem! Rinse thoroughly with clear water. <b>Important!</b> Do not brush hairsystem when wet.
Shine and care	Mix 1 tablespoon <b>Manager Top Balm</b> with 1 litre lukewarm water. Keep hairsystem in this solution for about 5 minutes. Do not rinse! Squeeze softly in a towel. Gives hair surface an antistatic treatment and leaves it looking healthy and fully revitalised.
Drying	Squeeze softly in a towel and let hairsystem air dry without extra heat. With the wig stand it will dry quickly. Brush and style only when hair is completely dry!
Shine and hold	Perfect finish for all hairstyles. Hairsystem will stay longer in a good condition and full of natural shine by daily use of <b>Manager Top Hair Shine + UV-Protection</b> . Gently moistening without overloading. Spray sparingly on dry hair.

# MANAGER TOP CARE PRODUCTS



Synthetic Hair Care

Professional Hair Care

Natural Hair Care

- ① **Manager Top Shampoo**  
Shampoo for cleaning of synthetic hair
- ② **Manager Top Balsam**  
Shine and care for synthetic hair
- ③ **Manager Top Cleaner**  
Cleansing Spray for adhesive surfaces and scalp
- ④ **Manager Top Hair Shine + UV-Protection**  
Perfect finish for human and synthetic hair
- ⑤ **Manager Top Vital Shampoo**  
Shampoo for soft, silky and luxurious human hair
- ⑥ **Manager Top Vital Balm**  
Balm to repair and detangle the structure of human hair



- ⑦ **Wig Stand**  
Wig stand for storage and for drying
- ⑧ **Half-bowl made of Styrofoam**  
For storage of hairsystem
- ⑨ **Suction holder (plastic)**  
For attachment of half-bowl of Styrofoam at table